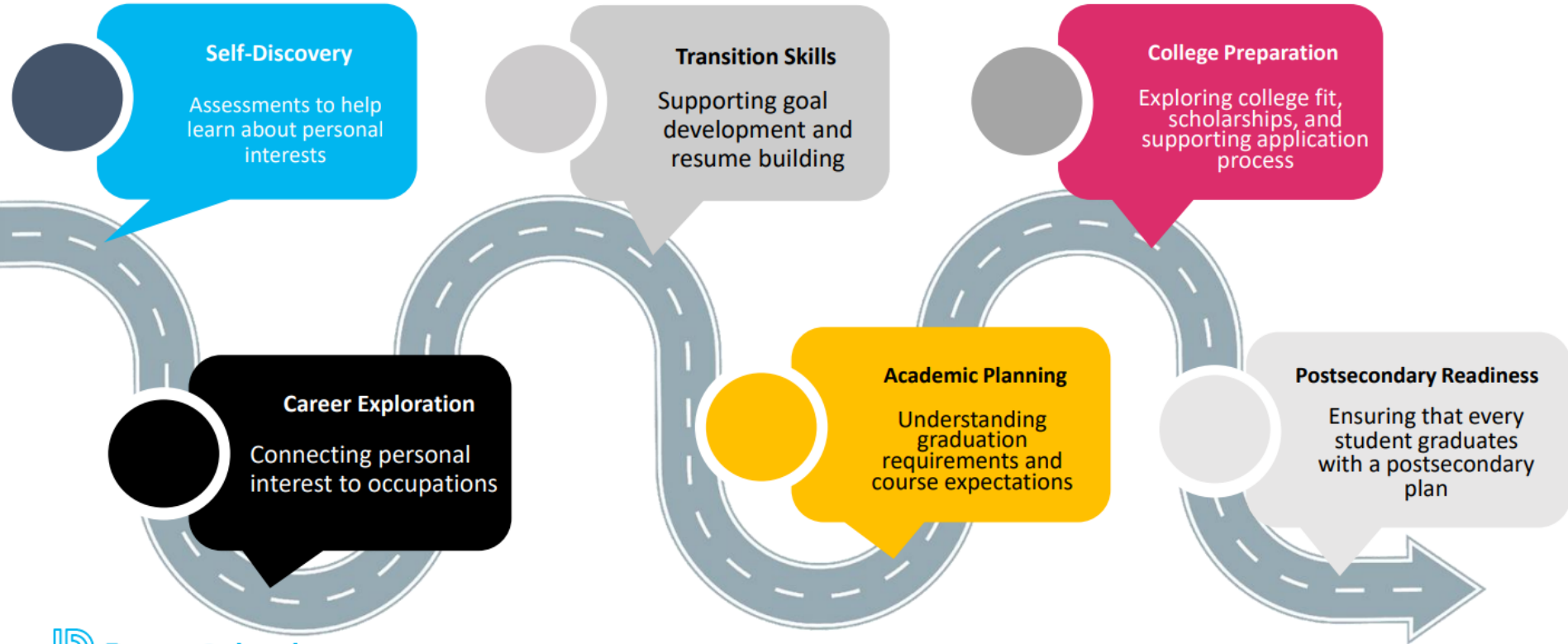




Naviance Career Exploration Resources



What is Naviance?



Future Planning Section

Naviance

Home Self-Discovery Courses Careers Colleges Planner

Juliana's Future Planning

College: Bachelor's Degree Edit Path

Welcome to Naviance

Welcome students to Naviance! We will be using Naviance for Career and College exploration! If you would like to setup a meeting with your teacher or counselor, please schedule a meeting using [Calendly here](#).

Plan Your Future

Quickly access your path highlights, favorite careers, information from your school, and more from this page.

Facebook LinkedIn YouTube

Students begin by selecting a future path, and they can edit this path as they go through their exploratory journey around interests, strengths, careers, and post-secondary plan.

Naviance

Home Self-Discovery Courses Careers Colleges Planner

Juliana's Future Planning

College: Bachelor's Degree Edit Path

Welcome to Naviance

Select Path

Select your path. You have the ability to add an optional secondary path.

Priority Add Secondary Path

- College: Associate's Degree
Earn an associate's degree or certificate in two years or less by attending a two-year community college or junior college.
- College: Bachelor's Degree
Earn a Bachelor's degree in four years by attending a four-year private or public college or university.
- Career Education or Trade School
Enroll in a short-term training program at a career or vocational-technical college and earn a certificate or associate's degree for an industry such as health care, cosmetology, and plumbing.
- Apprenticeship Program
Enroll in an apprenticeship to gain on-the-job training with classroom instruction and mentoring that leads to a skilled trade or profession.
- Military Service
Enroll in the search of the U.S. Armed Forces right after high school or join after college by enrolling in a Reserve Officer Training Corps (ROTC) program.
- Employment
Enter the job force right after high school to develop work skills and learn on the job without any formal training or education.
- Undecided
Not sure what to do after high school? Talk to a school counselor about different pathways to help decide what's best.

Cancel Select Path

11:20

Plan Your Future

Quickly access your path highlights, favorite careers, information from your school, and more from this page.

Career Goals

- Accountants and Auditors
- Actors
- Administrative Services Managers

Favorite Careers

@ student.naviance.com

Self-Discovery Assessments

Self-discovery assessments in Naviance provide a structured way to explore careers – all data is populated via O*Net

Self-Discovery Section

The screenshot shows the Naviance website interface. At the top, the navigation bar includes 'Home', 'Self-Discovery', 'Courses', 'Careers', 'Colleges', and 'Planner'. The 'Self-Discovery' menu is highlighted, and a dropdown menu is open, listing the following options:

- Self-Discovery Home
- Career Cluster Finder
- Career Interest Profiler
- Career Key
- Intelligences®
- Learning and Productivity®
- Personality®
- Skills®
- StrengthsExplorer®

The main content area features a 'Plan Your Future' section with the text: 'Quickly access your path highlights, favorite careers, information from your school, and more from this page.' Below this is a 'Career Goals' section with icons for 'Accountants and Auditors', 'Actors', and 'Administrators'. A 'Welcome to Naviance' message is also visible, along with social media icons for Twitter, Instagram, Facebook, LinkedIn, and YouTube.

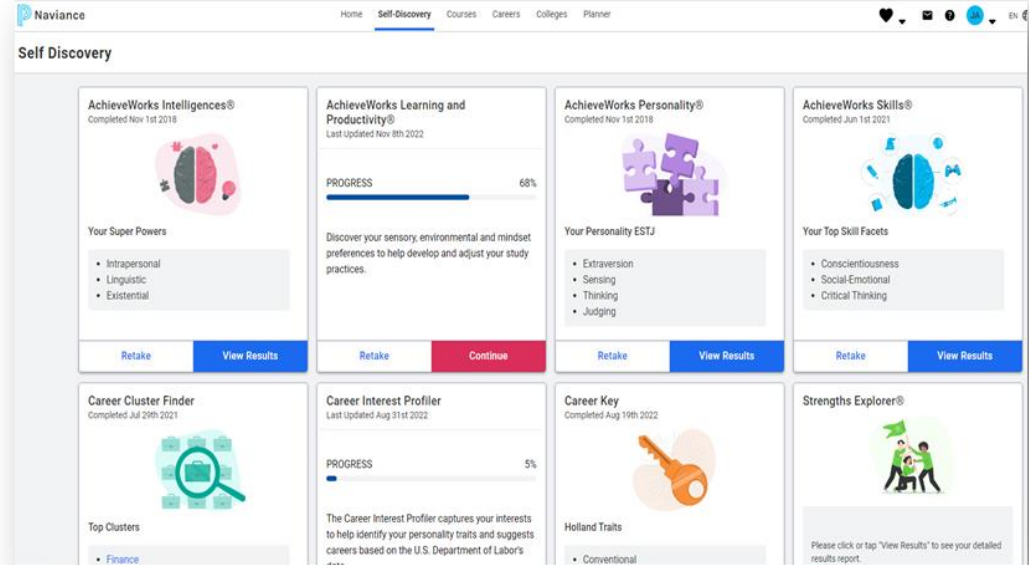
Students get to know their strengths, and how their interests and skills lead to good fit career choices.

They can see all assessments or click on an individual assessment from the dropdown to go directly to that assessment.

Self-Discovery: Set a Purpose & Explore Careers

All Assessments below provide students with careers and pathways of best fit

- Start with discovering **strengths**:
 - Intelligences
 - Personality
 - Skills
 - Strengths Explorer
 - Learning & Productivity
- And **interests**:
 - Career Cluster Finder
 - Career Interest Profiler
 - Career Key



Career Cluster Finder Questions

Four screenshots of the Career Cluster Finder assessment questions. Each question asks the user to choose whether they like or dislike an activity. The activities shown are:

- Learn how things grow and stay alive.
- Follow logical, step-by-step procedures.
- Work with computer programs.
- Be involved in politics.

Career Cluster Finder Sample Report



11:19

Naviance

Back to Self-Discovery

Career Cluster Finder COMPLETED Jul 29th 2021 [Retake](#)

Summary

This report displays National Career Clusters that are a best fit for you based on your interests and personal qualities from when you took this assessment. National Career Clusters are a framework that organizes careers into Clusters and Pathways. These often align to academic programs and majors at schools and post-secondary institutions.

Your Top 4 Cluster Matches

Naviance provides your top scoring matches based on what you entered about your interests.

Table of Contents

Summary [Previous](#) [Next](#)

AA student.naviance.com

11:19

Career Cluster Ranking

Here are all the Career Clusters in order of your combined interest, qualities and subject scores.

Finance	Score: 9
Health Science	Score: 9
Human Services	Score: 9
Agriculture, Food and Natural Resources	Score: 8
Architecture and Construction	Score: 8
Business Management and Administration	Score: 8
Education and Training	Score: 8
Government and Public Administration	Score: 8

Table of Contents

Career Clus... [Previous](#) [Next](#)

AA student.naviance.com

Additional Self-Discovery Assessment Resources...

Grade Level	Self-discovery assessment	Resources
06-08	Career Key	Help Center Assessment Details Video Resources & Partnership Information
06-09	Career Cluster Finder	Help Center Assessment Details
06-09	AchieveWorks Learning & Productivity	Help Center Additional Resource: lesson plans/counselor handbook
09 OR 10	StrengthsExplorer	Help Center Additional Resource: lesson plans/counselor handbook
08-10	Career Interest Profiler	Help Center
08-10	AchieveWorks Personality	Help Center Additional Resource: lesson plans/counselor handbook
09-11	AchieveWorks Intelligences	Help Center Additional Resource: lesson plans/counselor handbook
10-11	AchieveWorks Skills	Help Center Additional Resource: lesson plans/counselor handbook
12	Transition custom survey from library Game Plan Survey (built-in)	Help Center Survey Builder Help Center Success Planning

Work-Based Learning (WBL) – Naviance Virtual Bulletin Board

- [WBL School-based resources Naviance Help Center Site](#)
- [WBL District-based resources Naviance Help Center](#)