

# Welcome to the Unified Insights PowerSchool PowerUp!



# PowerUPs

October 24,  
2023

# Education Impact Consultants



**JAVIER ALFONSO**  
Unified Insights  
Education Impact Consultant

**Experience:**

- Ed.S in Urban Leadership from University of Missouri-Kansas City
- 
- 5 years classroom/instructional coaching
- 7 years district administrator
- 6 years education consultant

**Role/Focus:**

- Best practices
- Data culture
- Strategic Planning
- End User Adoption



**DEBRAH ARRIOLA-JACOBSON**  
Unified Insights  
Education Impact Consultant

**Experience:**

- Masters in Education from Arizona State University
- Teach For America Alum
- 7 years in classroom experience
- 3 years as Head of Curriculum & Instruction
- 2 years as Vice Principal

**Role/Focus:**

- Best Practices
- Data Culture
- Strategic Planning
- End User Adoption



**CAITIE MOSS**  
Unified Insights  
Education Impact Consultant

**Experience:**

- Ed.S. in Instructional Leadership from Lincoln Memorial University
- 10 years of classroom experience
- 5 years Lead Teacher and Building Level Technology Expert

**Role/Focus:**

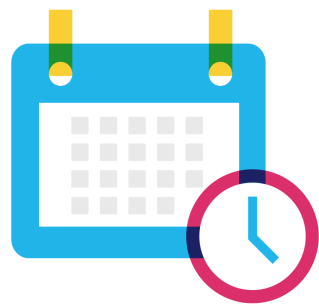
- Best Practices
- Data Culture
- Strategic Planning
- End User Adoption

# Today's Agenda

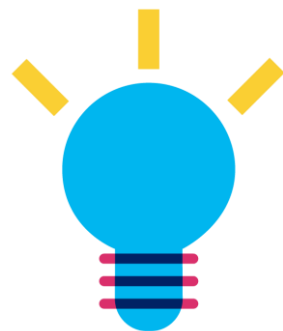


- Welcome and Overview
- Assessment Updates
- Product Updates
- Support Updates
- Community Connect Demo
- EIC Updates
- Closing and Next Meeting Information

# PowerSchool PowerUps



**Recurring meeting with  
PowerSchool Education  
Impact Consultants**



**Learn about recent  
product releases,  
roadmap, & integrations**



**Hear from PowerSchool  
experts on seasonal,  
best practice topics.**



**Collaborate, network,  
and share best practices  
with other  
PowerSchool districts**

# PowerSchool PowerUps Events Page

- Register for **any** upcoming PowerSchool PowerUp Events!
  - *Events Hub > All Events > PowerUp Events*
- PowerUps are currently offered for:
  - Classroom (Schoolology & Performance Matters)
  - Unified Classroom Special Programs
  - Naviance
  - Enrollment
  - Talent (Professional Learning, Applicant Tracking, Records and Onboarding, Perform)
  - Unified Insights

The screenshot shows the PowerSchool PowerUps Classroom (Thursday Session) event page. The page header includes navigation links: Our Community, Events Hub, PeopleAdmin, and My Contacts. The main title is "PowerSchool PowerUps: Classroom (Thursday Session)". Below the title is a search bar and a breadcrumb trail: PowerSchool Community > All Events > PowerUp Events > PowerSchool PowerUps: Classroom (Thursday Session). The event title is "PowerSchool PowerUps: Classroom (Thursday Session)". The event is scheduled for February 17, 2022 at 1 PM Eastern Time. A "REGISTER NOW" button is prominently displayed. The page also includes a "Will you be attending?" section with "Yes", "No", and "Maybe" buttons, and a "GOING (0) NOT GOING (0) MAYBE (0)" summary. The event description states: "PowerSchool PowerUps: Classroom meetings are led monthly by the Classroom EIC Team. These meetings focus on various topics and updates for Performance Matters and Schoolology Learning." Topics listed include "Performance Matters: 22.2 Product Updates and PowerSchool Source Item Bank Updates" and "Schoolology: Usage and Course Analytics Best Practices". The page also includes a "Labels (2)" section with "Performance Matters" and "Schoolology" labels.

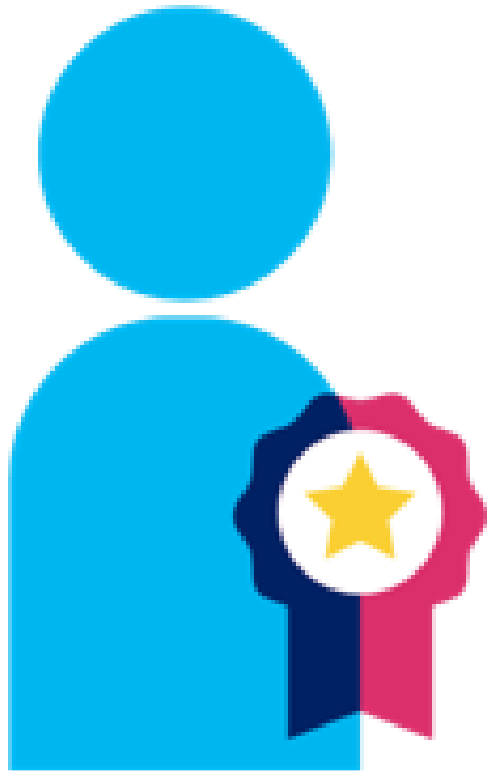
# Assessment

# Assessment Updates

- **Connector change process**
  - A connector applies logic and computation to raw data files
  - Communication to you, with TechNotes, is now included in the process
  - Includes risk assessment, impact, regression, QA and now proactive communication to you
- **Standard content update project**
  - Long-term project to enhance standard content and make that content compelling
  - Starting with ACT, SAT, AP and state assessment
- **Supported assessment list will be updated on 12/1**
  - 4 new tests added to date



# Assessment Updates



Continue to focus on experience, reliability, velocity

The trajectory continues

- Change management
- QA
- Consulting services

Our day in the life

- Over 2,000 tickets created during BTS season
- On any given day the team may work for over 100 customers
- SQL, JavaScript, JSON, Python
- Project management, tactical and strategic calls



# Product Team

# Introductions

## Devon Robinson

Director of Product

### Experience:

- B.A. in Math and Masters in Finance from University of Virginia
- 10 years in Analytics
- 5 years in financial technology
- 5 years in education technology with PowerSchool



# Highlights from the Release - Features

Feature	Description
Interventions	<p>Intervention module added featuring two new dashboards:</p> <ul style="list-style-type: none"><li>• Intervention Overview</li><li>• Intervention List</li></ul>
Student Data Wall	<p>A new Student Datawall dashboard has been added under Essentials, Students.</p> <p>The dashboard compiles student demographics, scores, attendance, and behavior records into navigable columns.</p> <p>The layout allows for data filtering and data export to Microsoft Excel for further analysis.</p>
District Configuration Options	<p>Added new options for customer-defined Course Subject and Action Type mapping along with the pre-defined values in the combo-field:</p> <ul style="list-style-type: none"><li>• Utility Apps, District Configuration, Academics, Course Subjects</li><li>• Utility Apps, District Configuration, Behavior, Action Type</li></ul>

# Highlights from the Release - Enhancements

Product Area	Summary	Release Note
Behavior	Updated Behavior Mapping	Customers can now send incident data configured as ProblemBehavior within the SIS behavior log entry. Through Unified Insights, they can enable a back-end flag named "LogEntriesOption1_with_ProblemBehavior" to include the ProblemBehavior incident data in metrics.
Essentials, Attendance	New School detail columns	On the Chronic Absences dashboard, columns "# of Students" and "% of Students" were added to the School detail list for the following metrics: <ul style="list-style-type: none"> <li>"Do We Have Students that are Close to Being Chronically Absent?"</li> <li>"Which schools have the most chronically absent students?"</li> </ul>
Essentials, Academics	New date filter	A multi-select Grading Period filter was added to the following Academics dashboards and their respective detail pages: <ul style="list-style-type: none"> <li>Standard by Grades</li> <li>School Standard Progress</li> <li>Student Standard Progress</li> </ul>
Essentials, Behavior	New date filter	Added a new Date Range data filter to the Incident Analysis dashboard

# Highlights from the Release - Enhancements

Product Area	Summary	Release Note
Essentials / Student Profile, Attendance	New metrics	The following metrics were added to the Student Profile Attendance Overview dashboard: <ul style="list-style-type: none"><li>• “Attendance Trends by Month”</li><li>• “Day of Week Absences”</li></ul>
Usage	Added Risk Analysis run date	The Usage dashboard now displays the latest Risk Analysis prediction run date in YYYY-MM-DD format.
Usage, Performance	Updated District Admin access and ETL run date	District administrators now have access to the Performance dashboard. In addition, the Usage dashboard now displays the latest dashboard refresh date in YYYY-MM-DD format.

- All release notes can be found [here](#)
- Put in a ticket if you are a 1.0 customer and want new content you see in the release notes

# Product Beta– School Improvement Plans



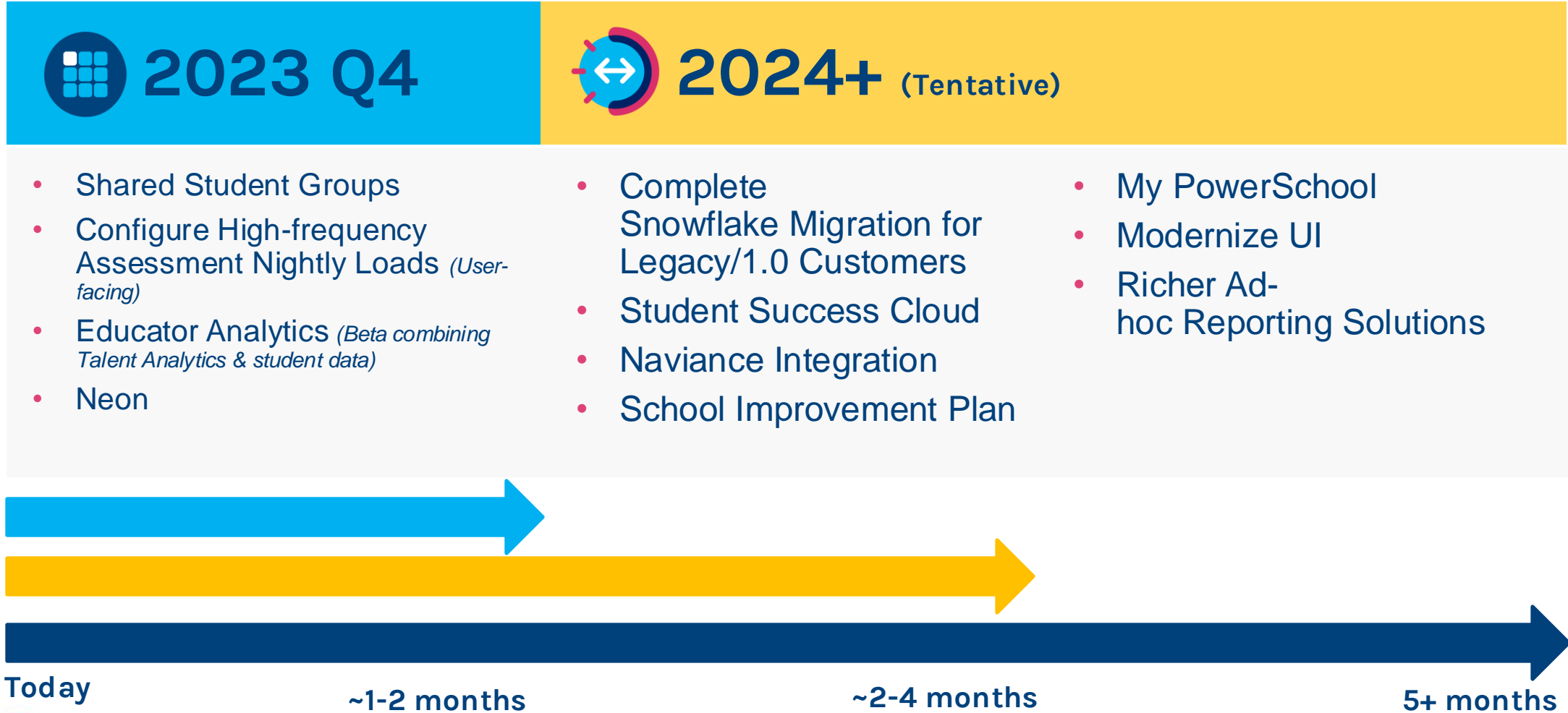
## What it is

- Plan housed in UIHN
- Drag and drop plan building capacity
- Ability to bring in data from UIHN into the plan
- Basic analytics around plans

## Where we are today

- ✓ Working on refactoring of the plan builder
- ✓ Looking to begin working with Beta customers by March
- ✓ If interested in exploring the beta option further please reach out to Courtney Stevens or your EIC/CSM/AM/PM/SSC
  - ✓ [Courtney.stevens@powerschool.com](mailto:Courtney.stevens@powerschool.com)

# Product Roadmap – Next 12 months



# Support Team



# Welcome To Support

- **Support Process**
- **Case Tips**
  - Specific Examples & Screen Shots.
  - Utilize PII Field
  - Timelines.
  - Assessment Loading Tickets.
  - Large Training Sessions.

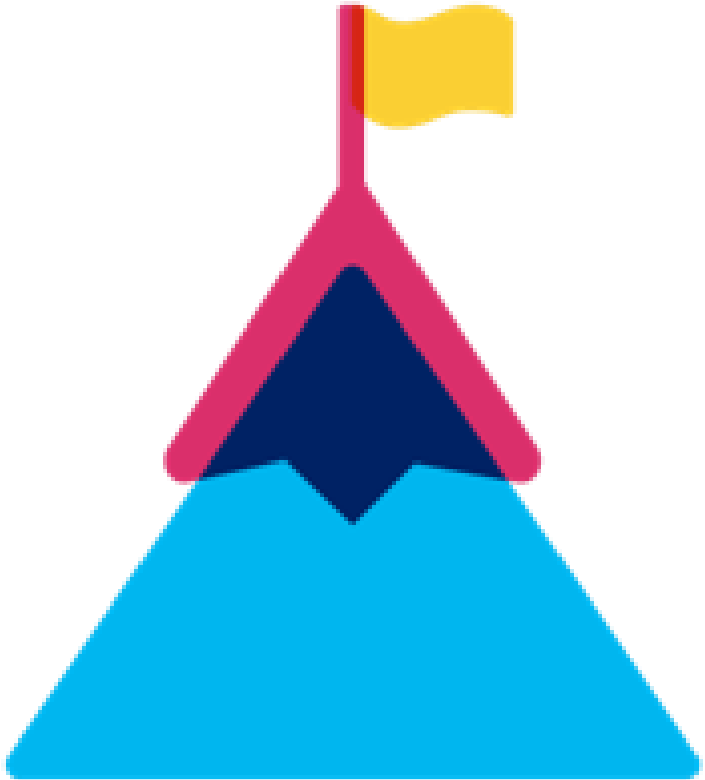


# PII Data

- Utilize the PII Field in Community Case Portal.

Secure Data for Troubleshooting Only ⓘ

# Mapping Users From SIS to UI



---

Users and Rolls need to be mapped for users to have access to the UIHN Dashboard.

---

Make sure the User Rolls are set.

---

Make sure the UIHN access rolls are set.

---

Wait for successful Nightly ETL build.

---

Knowledge Base Article.

# Community Connect Demo

# UI EIC Updates

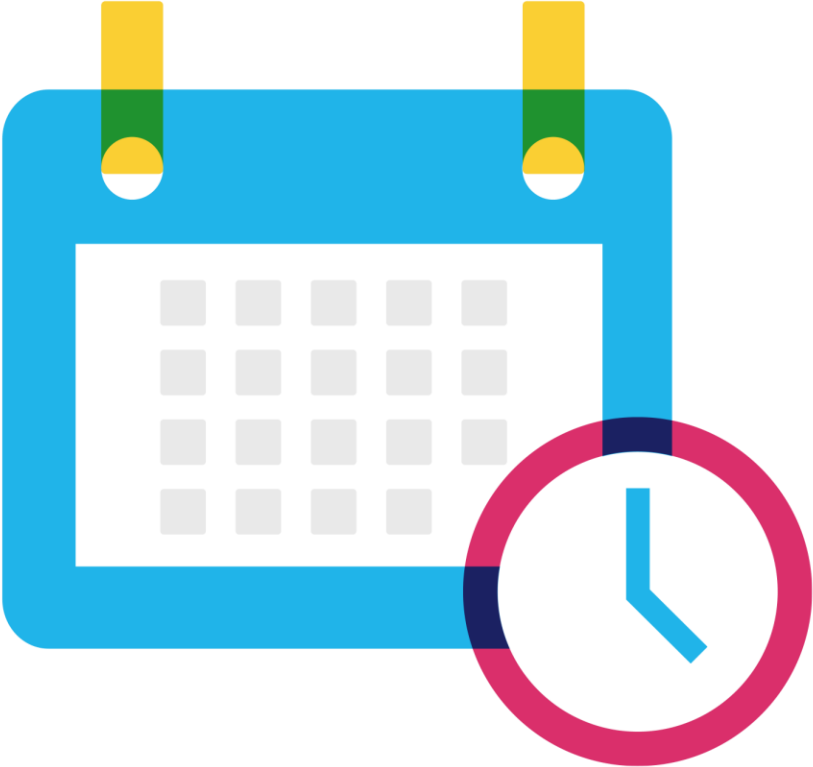
# You're Invited!

- Assessment PowerPanel
  - November 8, 2023 at 11:00 AM PT/  
2:00 PM ET
- UI Focus Groups:
  - Scheduled on a rolling basis. Please reach out if you are interested in participating.
- EIC PowerUps:
  - December 7, 2023 at 11:00 AM PT/  
2:00 PM ET
    - Topic: Data Culture On-going Engagement & Professional Development



# Next Unified Insights PowerUp Meeting

**Tuesday, January 23, 2024 at  
11:00 AM PT/ 2:00 PM ET**



# Next Steps

**Technical Contacts, connect with colleagues in**  
PowerSchool Community Page

**PowerUp updates will be shared** via the  
PowerSchool Community Page

**Email reminder** to join our next PowerUp  
Meeting

**Register for Upcoming PowerUps!**

- *Next PowerUp: January 23, 2024 at 11:00  
AM PT/ 2:00 PM ET*





# Please Share Your Feedback!

- You will be asked to take a **short survey** when leaving the Zoom Meeting
- Help us, help you! We value **your** feedback.





PowerSchool

Thank you for your Partnership!