

Ice Breaker

In the chat box, describe **ONE** way you are using **Performance Matters** that has impacted student success or teacher efficiency?





Welcome to PowerSchool

PowerUps: Performance Matters



PowerUps

5/25/2023

Today's Agenda

- Welcome and Agenda Overview
- Rollover Review
- Assessment Manager
- New Releases 23.5
- New Item Creation
- Q/A
- Smartsheet Form Questionnaire



**Please add your school district to your Zoom name!*

Nice to Meet You!



Todd Ramsey

Senior Education Impact Consultant
Working from Lynchburg, Virginia



Crissy Stout

Education Impact Consultant
Working from Lehigh Acres, FL



Gabi Gonda

Team Lead, Customer Success
Working from Boynton Beach, FL



Naomi Bush

Senior Product Owner
Working from Philadelphia, PA

Recordings are Available on PS Community!

Events Hub • PeopleAdmin • My Contacts

Rayyan_Mohammed
PowerSchool Team

Register Now for PowerSchool PowerUps: Classroom (Performance Matters)

01-24-2022 01:04 PM

Register Now for PowerSchool PowerUps: Classroom (Performance Matters)

Power UP Your Practice with PowerSchool PowerUps!

PowerSchool PowerUps are an exciting opportunity to connect with our Education Impact Consultants and other PowerSchool teams to learn about seasonal **best practices, product updates, and connect with other PowerSchool users.**

PowerSchool PowerUps: Classroom

PowerSchool PowerUps: Classroom meetings are led **monthly** by the Classroom EIC Team. These meetings focus on various topics and updates for **Performance Matters and Schoology Learning**.

Register to attend any or all of these hour-long sessions!

- [Third Tuesday's at 1 PM PT / 4 PM ET](#)
- [Third Wednesday's at 6 AM PT / 9 AM ET](#)
- [Third Thursday's at 10 AM PT / 1 PM ET](#)

*Content will be the same for each day and time. Please choose the meeting time that works best for your schedule!

Resources

Please refer to this page to access recordings and resources from our PowerSchool PowerUps: Classroom Performance Matters meetings!

January Recording: [Topic 22.1 Release Updates & Third-Party Item Banks](#)

In the meantime, we encourage you to utilize the support resources available on the PowerSchool Community. You can find [Recordings of Office Hours](#) from last year, as well as [Product Updates](#) and [Release Notifications](#).

Tip: Click the "Follow" button on the top right corner of the page to receive email updates each time content is added.

Tags: office hours PowerUps Add tags

Related Discussions & Articles

- PowerSchool PowerUps: Classroom (Thursday Session)
in PowerUp Events on 01-15-2022
- PowerSchool PowerUps: Classroom (Wednesday Session)
in PowerUp Events on 01-15-2022
- PowerSchool PowerUps: Classroom (Tuesday Session)
in PowerUp Events on 01-15-2022
- Join Us for PowerSchool PowerUps: Classroom (Schoology Learning)
in General Discussion Learning Forum on 01-24-2022
- Register Now for PowerSchool PowerUps: Classroom (Performance Matters)
in Performance Matters Forum on 01-24-2022

Search:

"PowerSchool PowerUps: [Performance Matters]"

Success with Unified Classroom



Join us on education's cutting edge at the year's most transformative K-12 community conference. Learn, share, and collaborate to reach your fullest potential through hands-on sessions, expert talks, and inspiring insights from peers and K-12 leaders.



Dates: July 9-12



Location: Walt Disney World
Dolphin Resort – Orlando, FL



<https://edge.powerschool.com/>

Submit a Product Suggestion on the Ideas Portal

Home > Contact Support > PowerSchool Ideas Portal

Welcome to the PowerSchool Ideas Portal

Use this portal to submit enhancement ideas and feature requests for all PowerSchool solutions and products. In addition to submitting new ideas, you can also review, comment on, and vote on others' enhancements. Visit the [Contact Support](#) page if you need product support.

Please note: we recommend searching existing ideas before submitting a new one to reduce duplication. Please review our article on [Submitting an Enhancement Request](#).

All submitted ideas are typically reviewed in 30 business days.

Add a new idea

Recent Trending Popular

Search Ideas

My ideas 0
My votes 0
My subscriptions 0

FILTER BY STATUS

Review In Progress 416
Reviewed - Unscheduled 20219
Scheduled - Future Release 691
In Development 92
Shipped 1287
Already Exists 686
Support Issue 127
Will Not Implement 849

FILTER BY PRODUCT/CATEGORY

> Applicant T...

3,677
VOTE

Make teachers accountable for entering grades in a timely manner
Too many times I have logged on to see all zeros for my child's grades
Created 13 Jan 06:36pm
eSchoolPlus SIS
Reviewed - Unscheduled 13

2,371
VOTE

Merge Duplicate Student Records
It would definitely be helpful if PowerSchool could come up with a merge records for duplicate students!! No matter how many times itell the office to be careful when enrolling and check the possiblematch screen, they still create new records. From...
Created 12 Jun 12:51am
PowerSchool SIS / Scheduling and Enrollment
Reviewed - Unscheduled

1,859
VOTE

Email Alert for due Homework and Exam
Would like to get an alert through email before the Homework/exam are due .
Created 13 Jan 06:33pm
eSchoolPlus SIS
Reviewed - Unscheduled 5

Filter by Status or PowerSchool Product

Search ideas before submitting a new one

Tags show if Product has Reviewed and/or Already Created the feature

Upvote ideas to let us know you'd like to see that feature too

Rollover

Best Practices for Performance Matters

Poll

Have you submitted your rollover dates?

In the chat, please answer with one of the following:

Yes

No

In the Process

Performance Matters Summer Transitions

Applies to Everyone

- 1 Design System (PDS)
- 2 OLA Student Status (from OLA Student Admin)
- 3 Updated Test Center Assessment Manager

Other

- 1 Sunset Legacy Archive
- 2 Redesigned Item Creation Opt-in



Rollover Updates

Important Dates

5/27 Freeze Schedule

6/24 Freeze Attendance/Grades

9/12 Snapshot

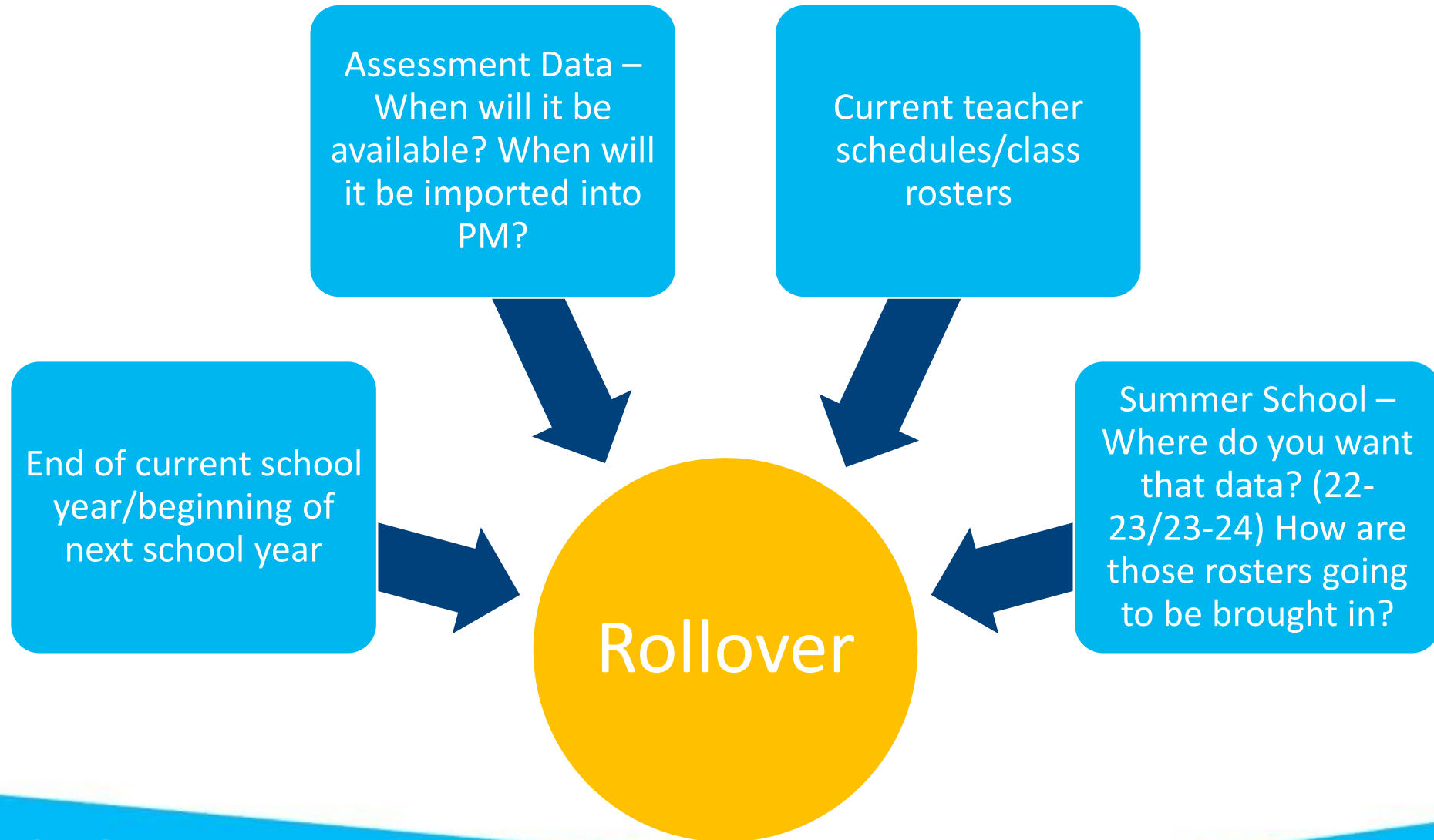
9/13 Roll

6/1 Universal Snapshot – Rolls Begin!

Important Changes

- Observational Assessments can be added to Test Retention
- Old Test Results has been removed in place of Common Assessments
- PDS will be enabled on School Year Roll

Key Considerations

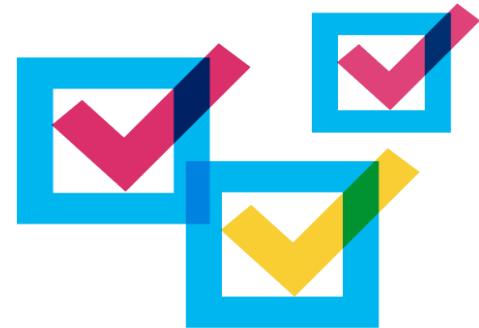


Key Considerations

After your district's school year rollover is completed in the SIS, you will want to update your exports to make sure you are sending the current school year's data prior to your Performance Matter's Rollover.

The exports that would need this are:

- Schedule
- Attendance - Daily/Meeting
- Student Grades - Current
- Student School Enrollment.



Support

Connect with PowerSchool Support experts and peers to find solutions to your pain points at the Performance Matters Assessment Office Hours.

You'll learn some insider tricks about using the Performance Matters Assessment. In addition, our experts will answer your questions through our live Q&A forum.



Assessment Manager

Previously Test Center



Key Improvements

- **Performance**
- Layout
- Sections
- Filters
- Updated proctoring modal

Updated look and feel – Legacy View

Test Center

Tests available for release and scoring

Online/Paper Based
 Observational

Additional Filters ▾ Course Type: Assessment Category:

Test Grade Level:

Limit to Open Test Window

Bulk Actions ▾

<input type="checkbox"/>	Preview	ID	Test Title	Course Type	Edited Date	Attributes	Students Scored	Actions
<input type="checkbox"/>		436657	Angela GradeCam test locking use case	Math	Apr 4, 2023 1:33:32 PM		4	...
<input type="checkbox"/>		3014540	Assessment Completion Time Window	Math	May 15, 2023 11:36:52 AM		6	...
<input type="checkbox"/>		2423370	Automation Machine Scored	Math	May 15, 2023 11:42:44 AM		2	...
<input type="checkbox"/>		2619733	Automation Test For Bulk scan upload_auto	Math	May 15, 2023 11:42:44 AM		1	...

Selected: 0 Displaying 15 tests

Updated look and feel – Assessment Manager

Assessment Manager
Assessments available for assignment and scoring

Search Limit to Open Assessment Window

Assessment Type
 Online/Paper Based
 Observational Assessments

Course Type: Assessment Category: Grade Level:

Bulk Actions

<input type="checkbox"/>	Preview	ID	Assessment Title	Course Type	Edited Date	Attributes	Students Scored	Actions
<input type="checkbox"/>		436657	Angela GradeCam test locking use case	Math	Apr 4, 2023 1:33:32 PM		4	...
<input type="checkbox"/>		3014540	Assessment Completion Time Window	Math	May 15, 2023 11:36:52 AM		6	...
<input type="checkbox"/>		2423370	Automation Machine Scored	Math	May 15, 2023 11:42:44 AM		2	...
<input type="checkbox"/>		2619733	Automation Test For Bulk scan upload_auto	Math	May 15, 2023 11:42:44 AM		1	...
<input type="checkbox"/>		3013124	AUTO_EtlAnsweredItemsStatusTest_aseu	Math	May 21, 2023 8:44:18 PM		0	...



Key Improvements

- Performance
- Layout
- Sections
- Filters
- Updated proctoring modal



Timing

- Your district will get Assessment Manager in next year's site as part of School year Roll process

Update 23.5 Release

23.5 Add Sort order while creating an Assessment Category



- Site Admins can now add sort order while creating an Assessment Category

The screenshot shows the 'Performance Matters' Site Administration interface. The 'Assessment Categories' page is active, displaying a table of current categories. A modal window titled 'Add New Assessment Category' is open, allowing the user to enter a name and sort order for a new category. The modal fields are filled with 'Remediation Tests' and '1'. The 'Close' and 'Save' buttons are visible at the bottom of the modal.

Sort Order	Name	OLA Student Admin Secure	Include in the Portal	Allow Feedback
0	Empow...	<input checked="" type="checkbox"/>	<input checked="" type="checkbox"/>	<input checked="" type="checkbox"/>
0	Feedba...	<input type="checkbox"/>	<input checked="" type="checkbox"/>	<input checked="" type="checkbox"/>
0	OA - H...	<input type="checkbox"/>	<input type="checkbox"/>	<input type="checkbox"/>
0	OA - Le...	<input type="checkbox"/>	<input type="checkbox"/>	<input type="checkbox"/>
0	OA - Running Records	<input type="checkbox"/>	<input type="checkbox"/>	<input type="checkbox"/>
0	Observational	<input type="checkbox"/>	<input type="checkbox"/>	<input type="checkbox"/>
0	Physical Fitness	<input type="checkbox"/>	<input type="checkbox"/>	<input type="checkbox"/>
0	Retention Testing	<input type="checkbox"/>	<input type="checkbox"/>	<input type="checkbox"/>
0	SEL Assessment	<input type="checkbox"/>	<input type="checkbox"/>	<input type="checkbox"/>



23.5 Limit Test Center Settings for Observational Assessments

Limit Test Center

- Limit Test Center functionality are settings to limit who can access this test in Test Center during the defined test window.
- Fields are
 - **Schools with access**
 - **Courses with access**
- Default setting is all schools and all courses

Title Required
10-100 characters
New Assessment Test

Assessment Category
Baseline

Course Types with access Required

ELA × Fine Arts ×

Course Type for reporting Required
ELA

Grades with access Required

Schools with access
All schools

Courses with access
All courses

Description
2000 character limit



23.5 Observational Assessment Fields

Title Required
10-100 characters

New Assessment Test

Assessment Category

Baseline

Course Types Required

ELA Fine Arts

Primary Course Type Required

ELA

Grade Levels Required

Description
2000 character limit

Characters Remaining: 2000

Title Required
10-100 characters

New Assessment Test

Assessment Category

Baseline

Course Types with access Required

ELA Fine Arts

Course Type for reporting Required

ELA

Grades with access Required

Schools with access

All schools

Courses with access

All courses

Description
2000 character limit

23.5 Observational Assessment in Student Detail



Observational Assessment

- Displays Test & Measure data for Observational Assessment Results
- Includes Standards, Color Bands & Date Submitted

Assessment	Standards	Assessment Category	Date Submitted
CT_Wilson Heggerty Baseline		OA - Heggerty	11/21/2022
Measure	Measure Response	Standards	
Adding Words and Syllables	0-2		
Blending Compound Words and Syllables	0-2		
Blending Onset Rime	0-2		
Blending Phonemes (if successful with blending/segmenting words, syllables, and onset rimes)	1-2		
Deleting Words and Syllables	0-2		
Isolating Final	0-2		
Onset Fluency	0-2		
Rhyme Production	0-2		
Rhyme Recognition	Greater than or Equal to 4		
Segmenting Compound Words and Syllables	0-2		
Segmenting into Onset Rime	0-2		
Segmenting into Phonemes (if successful with blending/segmenting words, syllables, and onset rimes)	1-2		
Substituting Words and Syllables	0-2		
CT_Wilton Letter ID (Upper and Lower Case)		OA - Letter ID	11/21/2022
New Assessment Observational	AP.19.SCI.CHEM.9-12.7.3.TRA-7.A.1, AP.20.CHEM.9-12.TRA-7.A.1, AZ.19.10.0200.90.AAC.9-12.7.4, AZ.21.48.0508.00.MANU.9-12.3.1, CT.22.CTS.HIST.8.8HW.5, CT.22.CTS.HIST.9-12.125JRI.6, CT.22.CTS.HIST.9-12.BLSRH.4, CT.22.CTS.MATH.K.KCC.1, CT.22.CTS.MATH.K.KCC.3, DC.08.FL3.K-12.FL.B.3.1.1, GA.19.CS.6-8.CSS.CC.6-8.42.1, GA.Toombs.LN.3, IL.ESC.22.MA.D65.Math.K.CC.1-2, IL.ESC.22.MA.D65.Math.K.CC.3, IL.ESC.22.MA.D65.Math.K.CC.4-5	Testing	01/21/2023
New Assessment Test		Testing	09/24/2022
Permissions Nina Benz test		Baseline	08/08/2022
Sample Observation - Statewide Physical Fitness Test	FL.19.CTE.8600042.6-8.16.01, FL.19.CTE.9590350.6-8.08.01, FL.AVID.21, FL.CTE.9590400.13.0	Mid-year	06/06/2022

Showing 1 to 6 of 6 entries

Previous 1 Next

23.5 Observational Assessment in Parent Portal

- **NEW** Manage Organization Setting to Display Observational Assessment Results in Student/Parent Portal
- Displays Test Name, Observed Results and any Standards associated
- Districts can configure what Assessment Categories show in the portal in Site Admin





Questions?

Feel free to come off mute or put your questions in the chat.

New Item Creation

Redesigned Item Creation Rollout



May

- BETA Testing with subset of interactions
 - Pilot program with small group of customers



June

- Controlled Availability with more interactions
 - Available to more customers



July

- Available to all customers with 23.6 release
- 12 out of 15 interactions
 - Excluding:
 - Hot Spot
 - Numeric Grid
 - Graphing
- Legacy editor available at same time and will be available for one more year

Spring 2024

- Remaining three interactions
- New interactions
 - Audio/Video Recording
 - Number line

New Item Creation

Currently...

Item Creation **New Item** **In Progress** **Save**


Item Title
Title goes here

Tags

Source

Item Bank

Standards
Not Selected **Select**

Attributes 

Add Notes

Add Next Steps

Examples | Preview | Side-by-Side

B **I** **U** **S** x_2 x^2 **A** **I** Font Size

Convert to Side-by-Side Template | QTI XML

Choice/Multi-Response | Inline Choice | Match | Hotspot | Extend Text | Text Entry

Order | Hottext | Hottext Place | Associate | Gapmatch | Gapmatch Place | Graphic Gapmatch

Draw | Upload | Instructions | Scoring Rubric | Conditional Scoring | Numeric Grid | Graphing (BETA)

New Item Creation

What's coming...

New Item In Progress

Item

Properties Build

Font - Size - **B** *I* U ~~S~~ ^{x₂} _{x₂} A- A+ ~~I_x~~

Side-by-Side Convert to Side-by-Side Template QTI XML Examples

Interactions

Auto Scored Interactions

- Associate
- Choice / Multi Response
With Conditional Scoring
- Gap Match
- Gap Match Place
Use with Gap Match
- Graphic Gap Match
- Graphing (Beta)
- Hot Spot
- Hot Text

Save

Properties Build

Title Required

Item Bank Required

Select

Tags

Standards

+ Add Standards

Attributes

Select



Redesigned Item Creation in Performance Matters

WHAT

Improving item creation in Performance Matters by modernizing the look and feel and improving the user experience

WHEN

Available to all customers with 23.6 release

Only turned on for district admins; can control access via menu security

**SUMMER 2023
OPT-IN**



IMPACTS

Legacy item creation will be available for a one-year transition period

NEXT STEPS

Look out for upcoming video and article training resources

Decide when to enable for your district, after 23.6 release



Questions?

Feel free to come off mute or put your questions in the chat.

**What future Performance Matters
PowerUp topics would you like to discuss
(besides the monthly new releases)?**

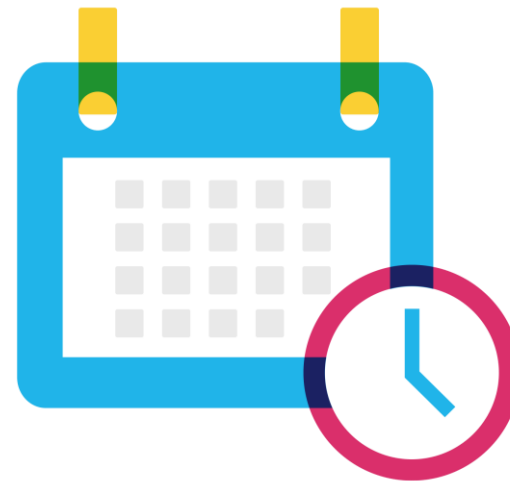
[Future PowerUp Topics Survey](#)

Join Us Again Next Month!



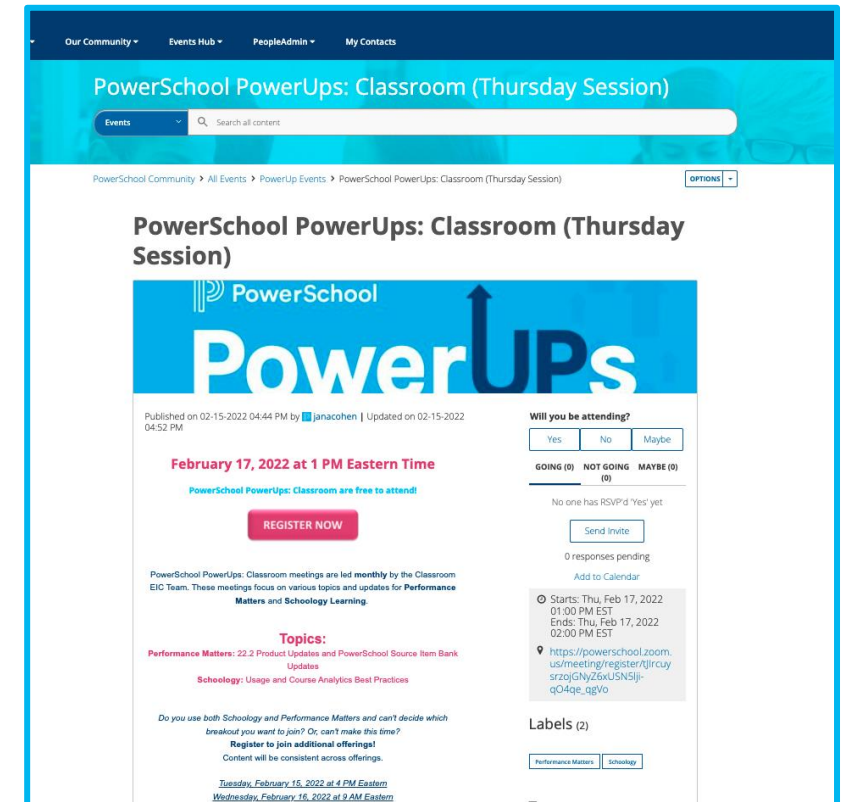
June 8th @ 2PM ET/ 11AM PT

Topics: Summer Maintenance

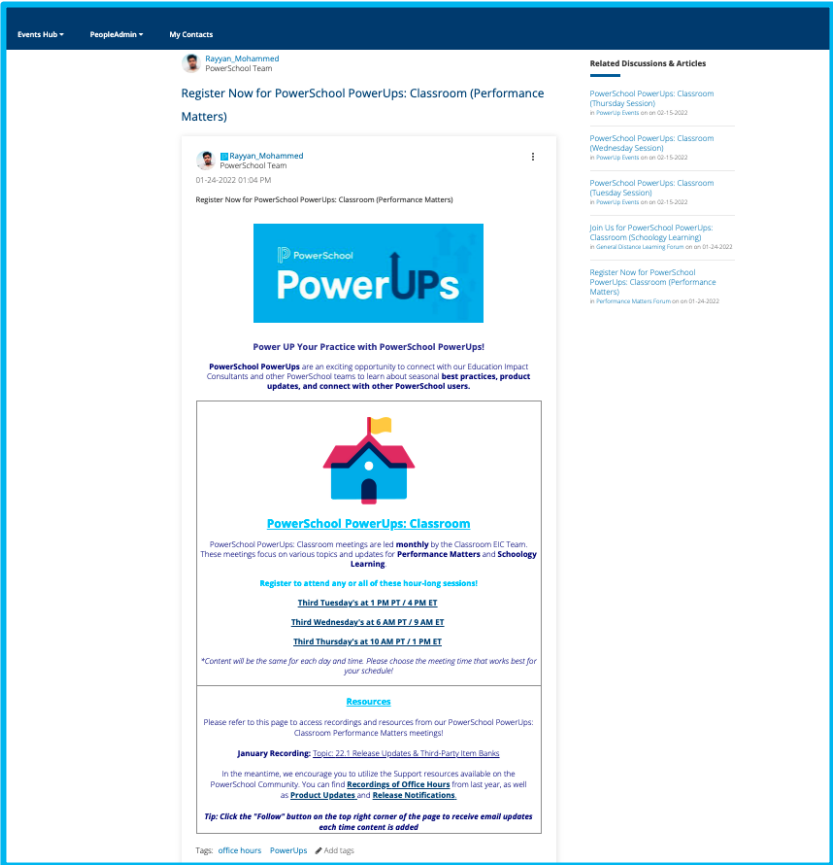


PowerSchool PowerUps Events Page: Live!

- Register for **any** upcoming PowerSchool PowerUp Events!
 - *Events Hub > All Events > PowerUp Events*
- PowerUps are currently offered for:
 - Performance Matters
 - Schoology
 - Unified Classroom Special Programs
 - Naviance
 - Enrollment
 - Unified Insight
 - Talent (Professional Learning, Applicant Tracking, Records and Onboarding, Perform)
 - Unified Classroom Curriculum & Instruction



Recordings are Available on PS Community!



Search 'PowerSchool PowerUps:
[Performance Matters]'



PowerSchool



Performance Matters Learning Journey

Ongoing Professional Development Services

PowerSchool has a professional development journey you can take to ensure success with your Performance Matters solution! Choose from a variety of professional development offerings based on the latest educational research, using strategies that have been proven to elevate professional practices.

The journey includes offerings that are tailored to specific waypoints along the learning path and offerings that can be beneficial at any stage of your development.



Performance Matters Program



Join us on an adventure to build assessment and reporting capacity across your organization with the Performance Matters Program using Schoology Learning. The Performance Matters Program is delivered via a blended model using the Schoology Learning platform for content sharing and asynchronous instruction.



Transform classrooms while delivering personalized data-driven instruction, managing progress for all students, and assessing student progress to address instructional gaps.



Model best practice to combine face-to-face, synchronous, and asynchronous sessions to gain a deeper understanding of comprehensive assessment management.



Ensure teachers of younger learners have the tools they need to quickly and easily observe and record student performance.



Use analytics for better student outcomes to create and share reports with your staff easily and securely.

Become a PowerSchool Champion!

PowerSchool Champions connect, share and learn with others in solution-specific communities. We share our expertise as teachers, administrators, technology directors, or talent leaders. We engage in interesting activities to accumulate points, collect badges, and earn fantastic rewards. Joining the Champions community provides:

- **Community** • Join an exclusive group of school and district leaders
- **Engagement** • Share your expertise and give product feedback
- **Opportunity** • Earn rewards like swag, cool opportunities, event attendance, and more
- **Growth** • Advance professionally, build your PLN and increase your Ambassador Program eligibility

Visit powerschool.com/champions and SIGN UP or email champions@powerschool.com if you have questions!



 PowerSchool

CHAMPIONS

Thank you for your Partnership!

