

# Welcome to the Unified Classroom Special Programs PowerSchool PowerUp!



# PowerUPs

March 8, 2022

# Today's Agenda

- **Welcome and Overview**
  - PowerUps Overview & Introductions
  - Follow Our PowerUps Events page in Community
- **Platform Highlight**
  - March 4th Platform Release
  - Product Name change
- **Special Programs Integrations**
- **Closing and May PowerUp Information**



# Special Programs PowerUps Team



## Robyn Skidmore

Education Impact Consultant

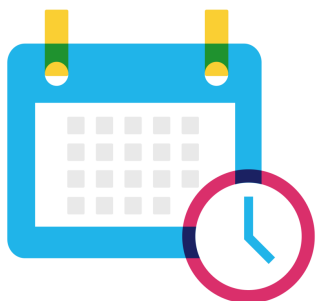


- Retired educator - 26 years in public education, former SPED/Inclusion teacher, Master of Special Education
- Joined PowerSchool in 2019
- Fun Fact: Enjoy floating on the river

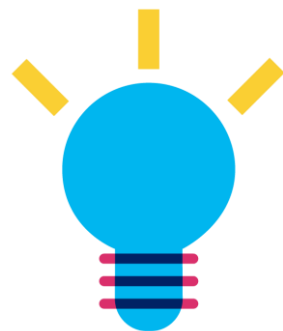
## Special Programs Support

- Our Support Team is on the call to assist with technical questions.
- Please submit your questions into the chat during presentation.
- There will be time for additional Q & A at end of the meeting.

# PowerSchool PowerUps



**Recurring meeting with  
PowerSchool Education  
Impact Consultants**



**Learn about recent  
product releases,  
roadmap, & integrations**



**Hear from PowerSchool  
experts on seasonal,  
best practice topics.**



**Collaborate, network,  
and share best practices  
with other  
PowerSchool districts**

# PowerUps Communication through PowerSchool Community

- Shared EIC resources
- Place to share resources across districts
- Discussion boards
- Post updates



# Let's take a quick tour!

# Special Programs Integrations

# System Administration vs ADMIN Role

	System Administration	ADMIN Role
<b>How is this role assigned?</b>	<ul style="list-style-type: none"><li>• Role is assigned based on role in SIS</li><li>• Used to perform day-to-day tasks</li></ul>	<ul style="list-style-type: none"><li>• Requires an additional password for additional log-in</li><li>• Refrain when using except when necessary</li></ul>
<b>What can users with this role do?</b>	<ul style="list-style-type: none"><li>• Does not have access to high-level administrative functions</li><li>• Cannot make changes to security groups and features</li><li>• Can access all documents and profiles within the system</li><li>• Can create staff profiles outside of SIS</li><li>• Can add general education students to Special Programs</li><li>• Can assign caseloads to staff members</li></ul>	<ul style="list-style-type: none"><li>• Can access, monitor, and alter data flow between documents, profiles, and SIS</li><li>• Can control and alter data integration and migration</li><li>• Can control all security features for each user and document.</li></ul>



# Integration....



# Integration with Your Student Information System

## Your SIS

Examples of information that is shared include:

- Student demographics
- Enrollment details
- District info
- Locations (schools)
- Class rosters
- Program activity and alerts



## Unified Classroom Special Programs

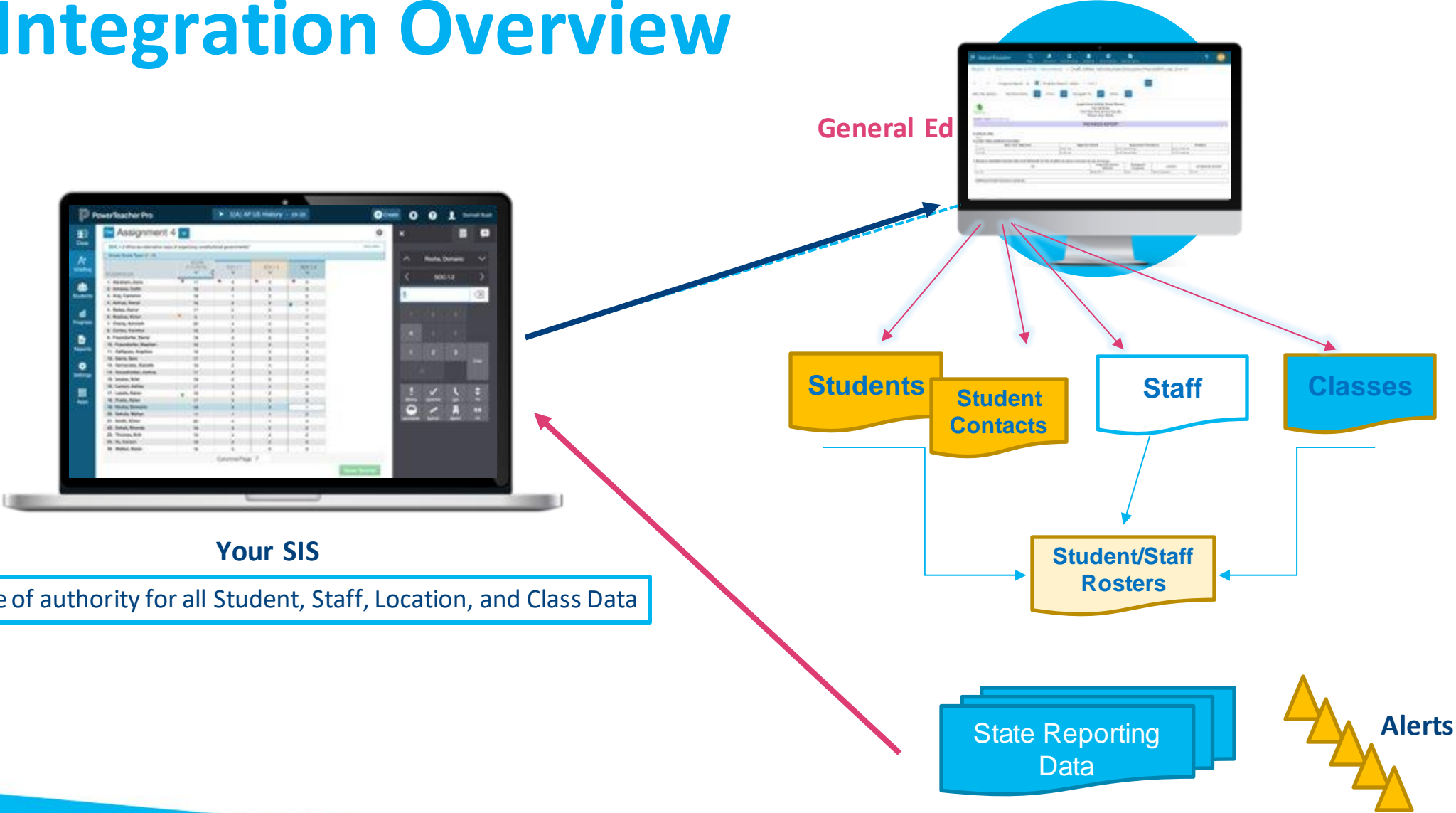
In a **FINALIZED** document:

- Targeted data fields within document are copied to the appropriate fields in student profile
- State-reportable fields will appear on a report designed to write-back to the SIS anytime a change is made to the data.

### Program Alerts:

- Flow from PSSP to SIS
- Displayed as icons next to student name

# Integration Overview



# Model Import Layouts

- General Ed Students
- Students
- Staff
- Classes
- Class Staff
- Class Students
- Locations
- Alternate Locations
- District
- State-Related

## Change Notification events:

- The SIS notifies Special Programs individual records have been added or updated
- Occurs in (almost) real time

🔍	PowerSchool - Staff Change Notification (model)		Staff	PowerSchool SIS Rest API
🔍	PowerSchool - Staff Import (model)		Staff	PowerSchool SIS Rest API
🔍	PowerSchool - Student Change Notification (model)		Students	PowerSchool SIS Rest API
🔍	PowerSchool - Student Import (model)		Students	PowerSchool SIS Rest

Server-controlled daily imports are a full refresh of SIS imported data fields scheduled “off peak” hours.

# Where do I find the Import Layouts?

Configuration Settings Curricula **Integration** Config Tasks Profile Types Keyword Tables Document Templates Workflow Case Types

Import Layouts Export Single Sign-On Calendar Integration DocuSign Account

Show: (All Profile Types) Data Source Type (All Data Source Types) Verify All More...

Name	Last Date Data Was Changed	Profile Type	Data Source Type
PowerSchool - AlternateStaffLocation Change Notification (model)		AlternateStaffLocations	PowerSchool SIS Rest API
PowerSchool - AlternateStaffLocation Import (model)	07/27/2014	AlternateStaffLocations	PowerSchool SIS Rest API
PowerSchool - Class Change Notification (model)		Classes	PowerSchool SIS Rest API
PowerSchool - Class Import (model)	07/27/2014	Classes	PowerSchool SIS Rest API
PowerSchool - ClassStaffRoster Import (model)	07/27/2014	ClassStaffRoster	PowerSchool SIS Rest API
PowerSchool - ClassStudentRoster Import (model)		ClassStudentRoster	PowerSchool SIS Rest API
PowerSchool - District Import (model)	07/26/2014	Districts	PowerSchool SIS Rest API

Indicates where the imported data will go

Indicates where data was imported FROM - this data import is managed through PowerSchool SIS Rest API

Administration > Configuration > Integration > Import Layouts







# Model Exports

- PS Alerts
- State Reporting Exports

Configuration Settings Curricula **Integration** Config Tasks Profile Types Keyword Tables Document Templates Workflow Case

Import Layouts Export Single Sign-On Calendar Integration DocuSign Account

Continuous Export is Enabled

Report Name	Enabled	Export Destination	Export Properties	Clear Last Successful Export Time Stamp	Last Successful Export Time Stamp	Last Export Attempted Time Stamp	
  PowerSchool Alert Export	<input checked="" type="checkbox"/>	U_TN_STUDENTS_ALERTS	Insert Record If Not Exists, Frequent Delta Export Computed Hash	<a href="#">Clear Timestamp</a>	03/25/2021 Thu, 12:14PM	03/25/2021 Thu, 12:14PM	 <a href="#">View Export Logs</a>
  PS English Learner Export	<input checked="" type="checkbox"/>	S_AL_STU_FEDERAL_X	Insert Record If Not Exists, Propagate Deletions For Profile Type, Frequent		Never	02/17/2021 Wed, 11:32PM	 <a href="#">View Export Logs</a>

Server controlled daily exports to PS SIS scheduled "off peak" hours

Administration > Configuration > Integration > Export

# Monitoring Integration

# Continuous Integration Monitoring

Integration > Continuous Integration Settings

Send Message  
Messages  
Announcements  
Calendar

**Edit SIS Instance**

Data Source PowerSchool SIS Rest API  
Type

Instance ID MON

Instance Name

External System 20.11.0  
Version

Import Enabled?  ←

Export Enabled?

Testing  Perform OneTime Immediate Import Enabled

**Best Practice: Assign SIS System Admin or SP Security Admin to receive notification of Row Issues/Failures**

**Notification Email Address**   
*Separate multiple addresses with a comma*

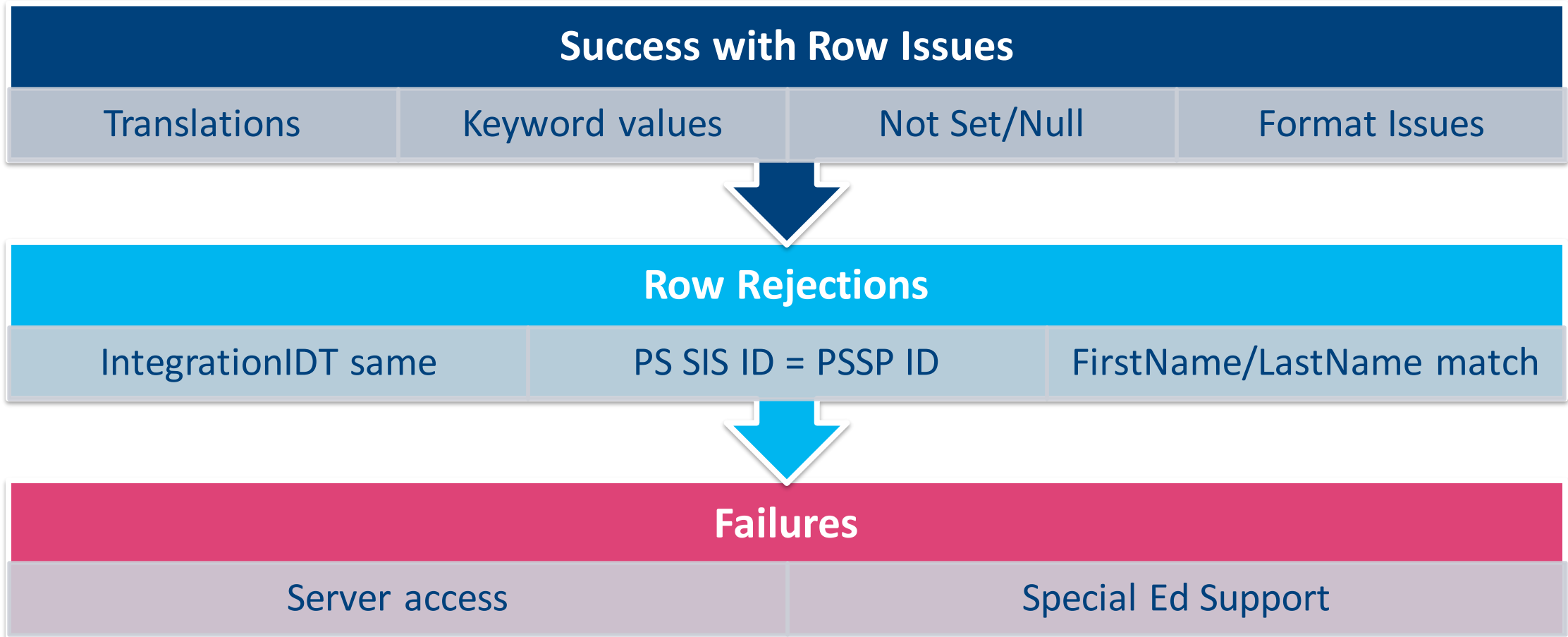
**Notification Events**

- Failed Imports
- Imports with Row Issues
- Successful Imports

Administration > Configuration > Integration > More > Continuous Integration Settings



# Troubleshooting Integration Issues



# Duplicate Profiles

- Check the Staff in Special Programs.
- If you see Duplicate Profiles, submit a Support ticket.
- It may be an issue that needs to be looked at further.

The screenshot shows the 'Special Programs' interface. At the top, there is a navigation bar with 'Special Programs' and icons for Search, Curriculum, Assessment, and Communication. Below this, there is a 'My Home Page' section, a 'Quick Access' section with a search bar for 'Search Student: type name or ID', and a 'Students Recently Worked With' section listing several staff members with their names and IDs. A search dropdown menu is open, showing options: Students, Classes, Districts, Locations, Staff (highlighted), and General Ed Students.

Search	Curriculum	Assessment	Communication
Students			
Classes			
Districts			
Locations			
Staff			
General Ed Students			

# Reviewing Import Logs for Errors

1. Select Administration > Configuration > Integration > Import Layout tab
2. Select Import layout to review
3. Click the More drop down
4. Click the View Import Logs

PowerSchool - Student Import (model)	03/24/2021	Success With Row Issues
--------------------------------------	------------	-------------------------

NOTES: None  
Last Import: Success With Row Issues : Continuous



Import Logs

< Import Logs   ↑ Next   ↓ Previous

**Completed Date/Time** 11/30/2020 Mon, 07:00 AM  
**Server Duration** 2 minute(s)  
**Status Code** Success With Row Issues  
**Status Message** Continuous integration completed, last location: 'Transition School (888888)'

Row	Problem	ID	Last Name	First Name	Integration IDT
792	Problem with BirthDate: '/' Must be MM/DD/YYYY, MM/DD/YY, MM-DD-YYYY, etc.	1085422			
5636	Problem with BirthDate: '/' Must be MM/DD/YYYY, MM/DD/YY, MM-DD-YYYY, etc.	1117381			

# Row Issues



Import Logs ×

< Import Logs   ↑ Next   ↓ Previous

**Completed Date/Time** 11/30/2020 Mon, 07:00 AM

**Server Duration** 2 minute(s)

**Status Code** Success With Row Issues

**Status Message** Continuous integration completed, last location: 'Transition School (888888)'

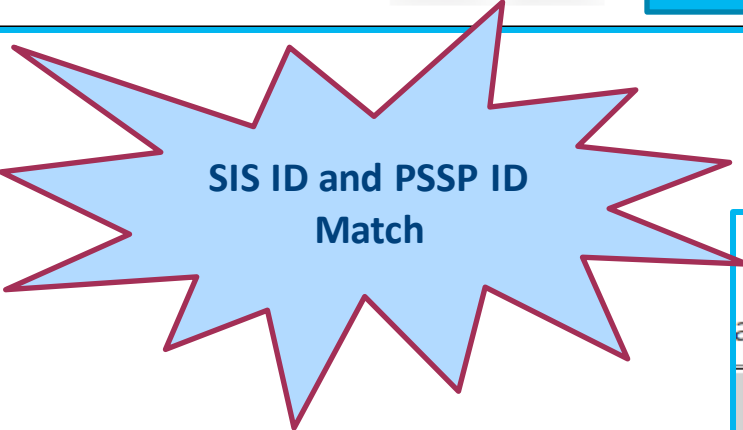
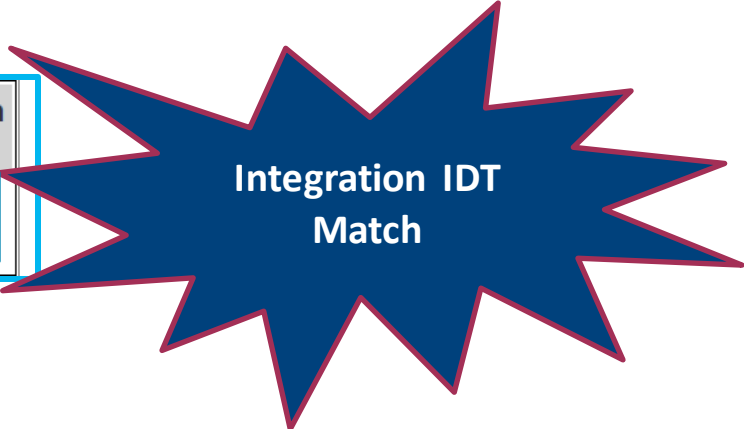
Row	Problem	ID	Last Name	First Name	Integration IDT
792	Problem with BirthDate: '/' Must be MM/DD/YYYY, MM/DD/YY, MM-DD-YYYY, etc.	1085422			NL:22148
5636	Problem with MM/DD/YY, M				

Row	Problem	ID	Last Name	First Name
9	Problem with EmailAddress: Must be a valid email address.	39370		

Row	Problem	ID	Last Name	First Name	Integration IDT
252	'Not Set' not a keyword. Problem with Province: 'Not Set' not a keyword.	1058427			NL:38088

# Row Rejections

Row	Problem	ID	Last Name	First Name	Integration IDT
48	Row rejected because the other match value would not be unique within the system.	739424711			



- If no imported profile data or documents → Delete Special Programs Profile
- If documents → Merge Special Programs Profile

Possible Solution(s)

- Please contact support for help with fixing this problem. Give the following information to support when contacting them.

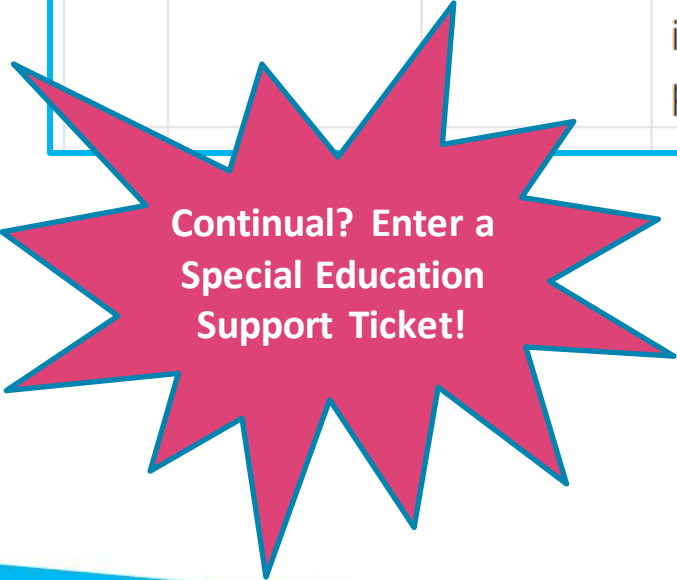
Item	SIS	Special Programs
ID	739424711	10216
IntegrationIDT		
Name	Jesse	Jesse

[Click here to go to the profile.](#)

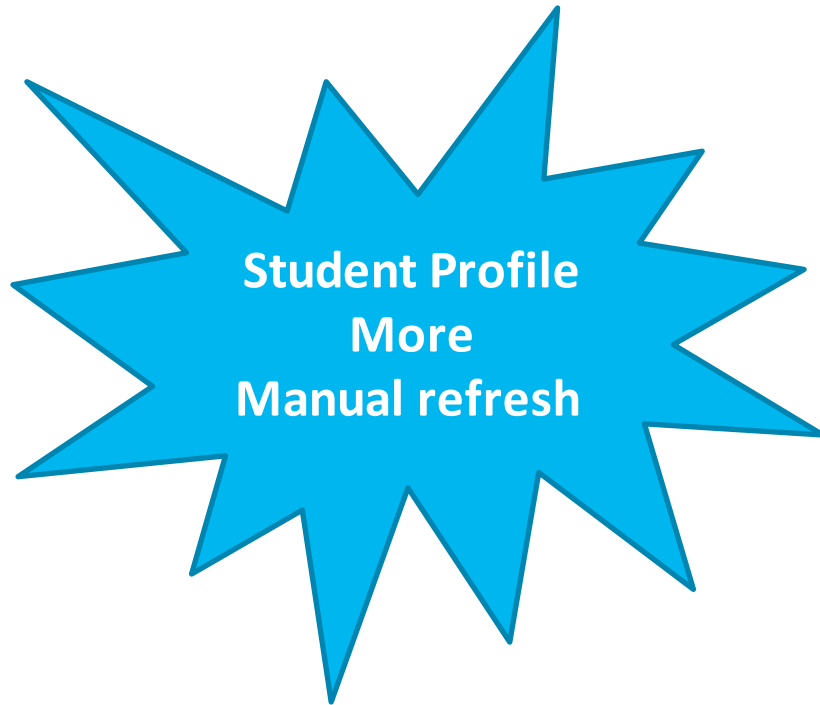
# Failures



+	11/15/2020 8:44:25 AM	<p>! Failed : Error encountered while importing data: Failed to connect to server. Error Invalid JSON primitive: . Response from server: OK [html][head][title]PowerSchool page unavailable[/title][script type="text/javascript"]function getQueryVariable(variable) {var query = window.location.search.substring(1);var vars = query.split("&amp;"); for (var i=0;i[vars.length;i++) {var pair = vars[i].split("=");if (pair[0] == variable) {return pair[1];}}var server = getQueryVariable("server")[/script][/hea...</p>
---	--------------------------	--



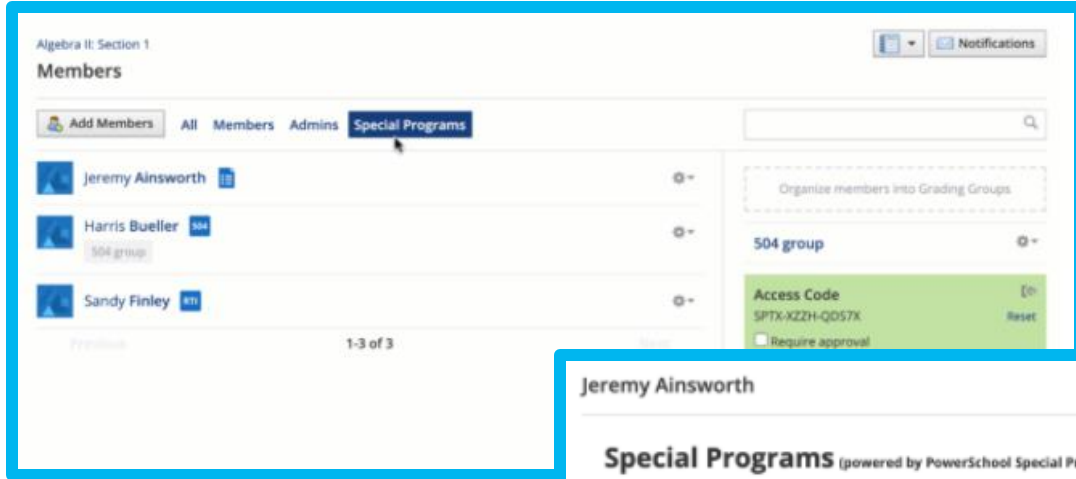
# But the import logs don't give enough information?



# Integration with Schoology Learning



# Connecting Special Programs with Schoology Learning

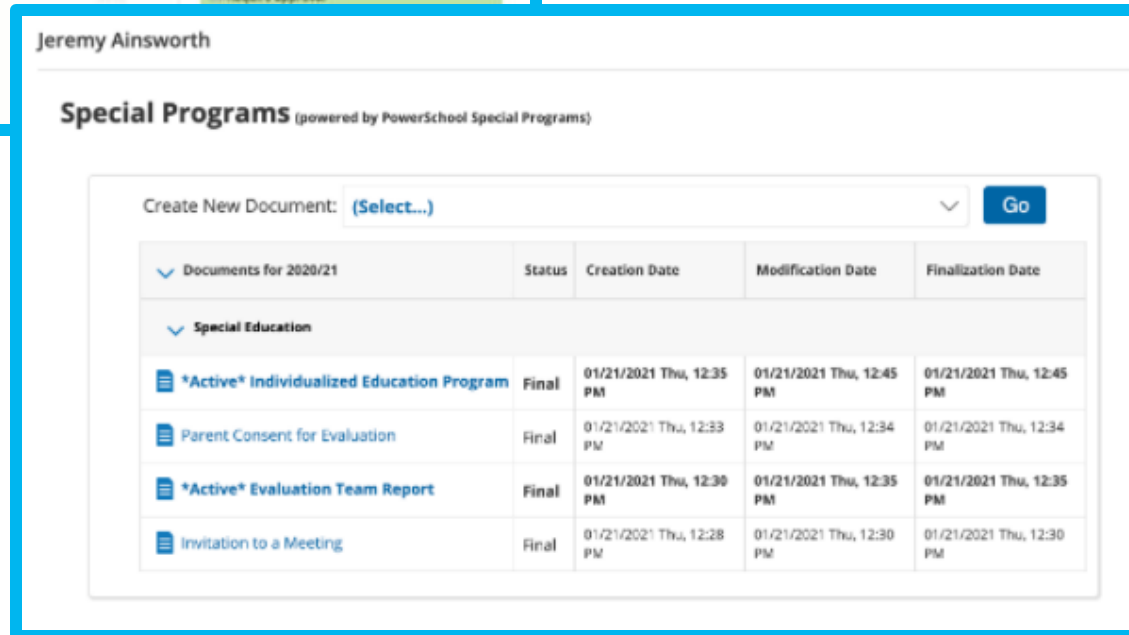


## System Requirements:

- PS SIS v 21.4.0.0 or later
- Shared Identity Provider across both Applications (i.e., PS SIS, Microsoft SSO, Google SSO)

## PS SP Information Displayed in SGY:

- Alerts
- Quick Filters
- Document Viewer



## Teachers Can:

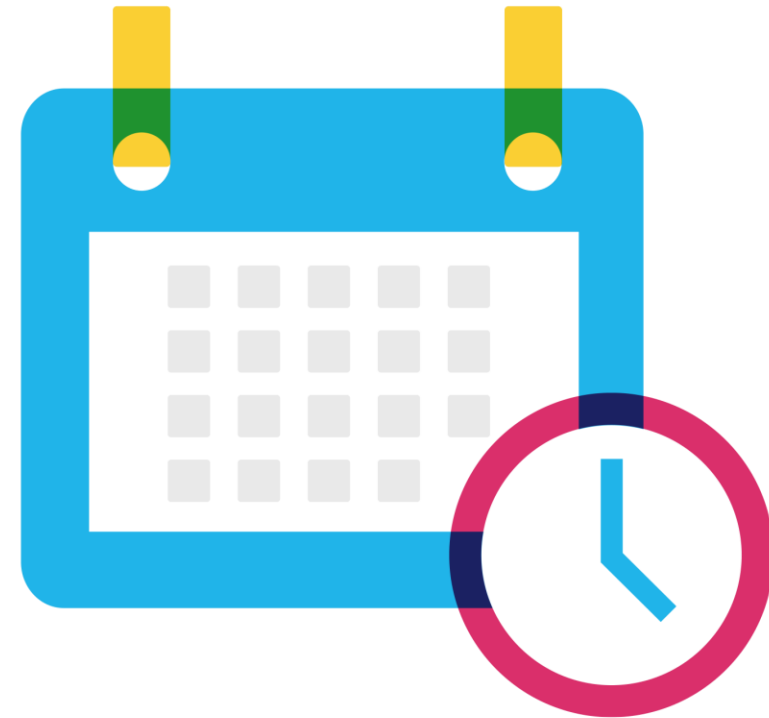
- View students' SP alerts in SGY to facilitate accommodations
- View necessary SP documentation in SGY
- Access course material accommodations, making it easier to assign to students



PowerSchool

# Next Steps

- **Connect with colleagues** in PowerSchool Community Page
- **Updates will be shared by EICs** via in the PowerSchool Community Page
- **Monthly email reminder** to join our next PowerUps Meeting
- **Register for Upcoming Special Programs PowerUps and Office Hours/Ask the experts**
  - **Special Programs PowerUps**
    - **May 8**
    - **Topic: End of Year Rollover**
  - **Special Programs Office Hours/Ask the Experts**
    - **March 24**
    - **Topic: Integrations and Data Flow**



# Become a PowerSchool Champion!

PowerSchool Champions connect, share and learn with others in solution-specific communities. We share our expertise as teachers, administrators, technology directors, or talent leaders. We engage in interesting activities to accumulate points, collect badges, and earn fantastic rewards. Joining the Champions community provides:

- **Community** • Join an exclusive group of school and district leaders
- **Engagement** • Share your expertise and give product feedback
- **Opportunity** • Earn rewards like swag, cool opportunities, event attendance, and more
- **Growth** • Advance professionally, build your PLN and increase your Ambassador Program eligibility

Visit [powerschool.com/champions](https://powerschool.com/champions) and SIGN UP or email [champions@powerschool.com](mailto:champions@powerschool.com) if you have questions!



 PowerSchool

**CHAMPIONS**

# Thank you for your partnership!

